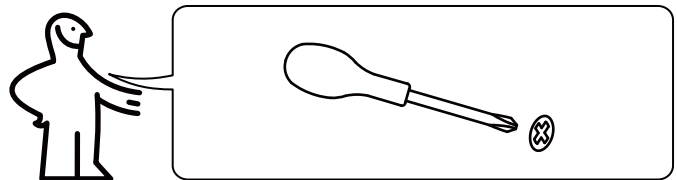


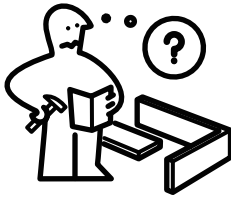
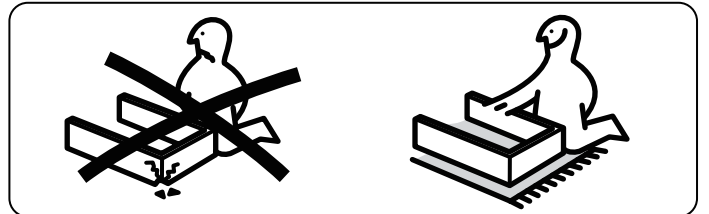
ASSEMBLY INSTRUCTIONS

Round Edge 3-Drawer Mobile Cabinet

Tools Required For Assembly



Assemble Item On a Clean Flat Surface

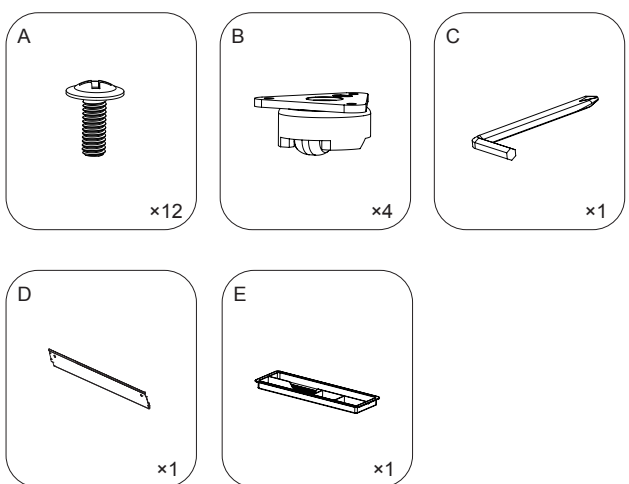


- Please check you have all hardware before assembling.
- Please ensure you have the name of the item and hardware part required and quantity.
- Please contact us by mail, if you have any questions, and we will reply you ASAP.
- Enjoy your new purchase!

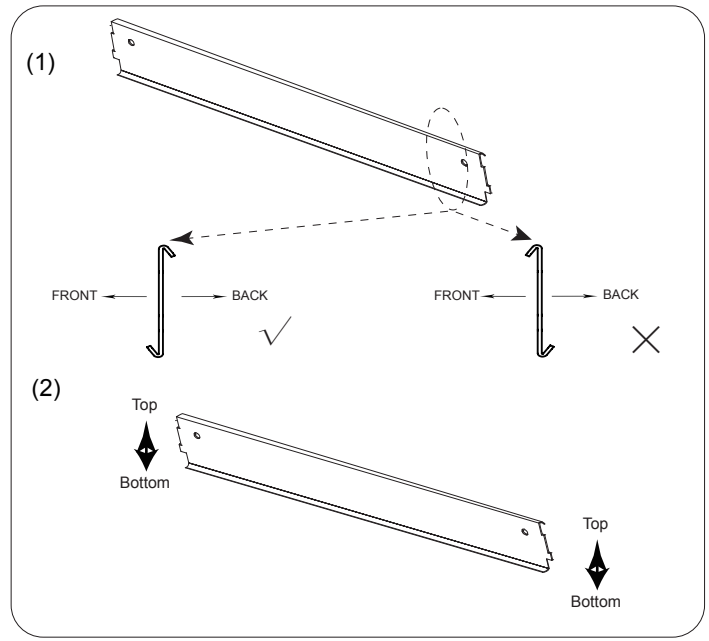
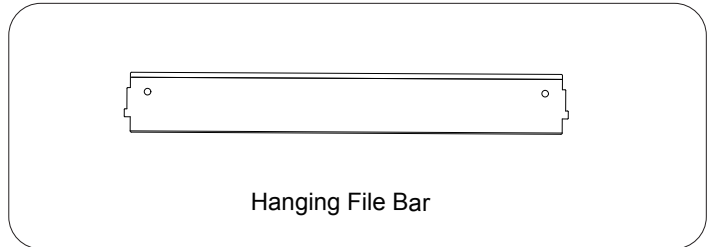
EXPLODED DRAWING:



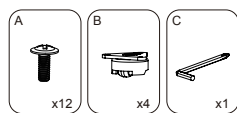
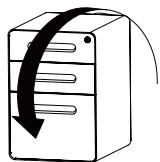
PARTS:



REMARK:



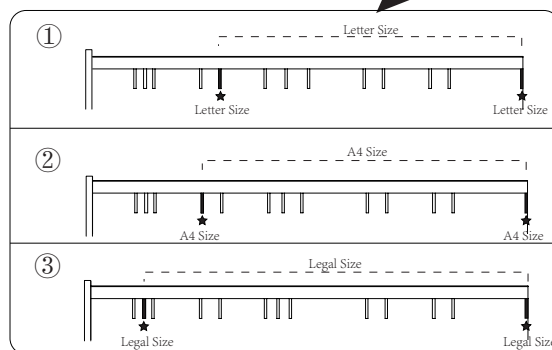
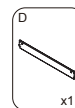
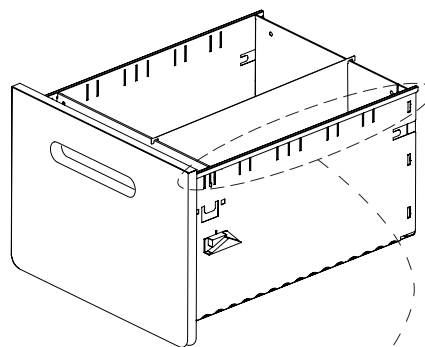
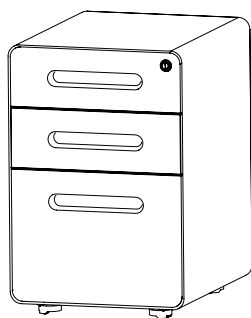
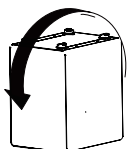
1.



One filing drawer support A4, legal, letter size file folders

3. The position of hanging bars for A4 size files

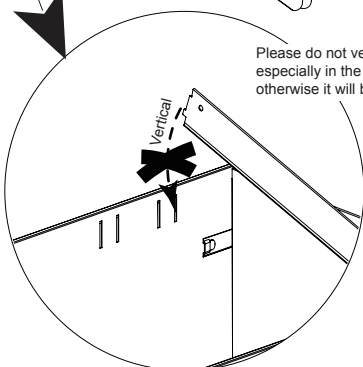
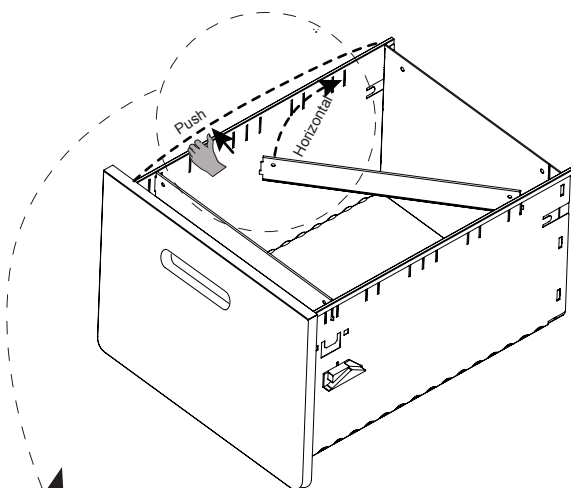
2.



REMARK:

Install or adjust the hanging file bar, please follow the below method

①



Please do not vertically install the hanging file bar, especially in the front or back of the filing drawer, otherwise it will be difficult to install.